



Woodbury County Conservation Dept.

4500 Sioux River Road, Sioux City, Iowa 51109
 Phone: 712-258-0838
 www.woodburyparks.com



Area Information

Acres: 609

Habitat: 1/2 Timber, 1/4 Upland, 1/8 Marsh, 1/8 Water

Usage: Multi-use including Hiking, Biking, Swimming, Camping, Fishing, Hunting, Shooting Range, Picnicking, Canoeing, Bird Watching

Species: Deer, Pheasant, Squirrel, Rabbit, Waterfowl

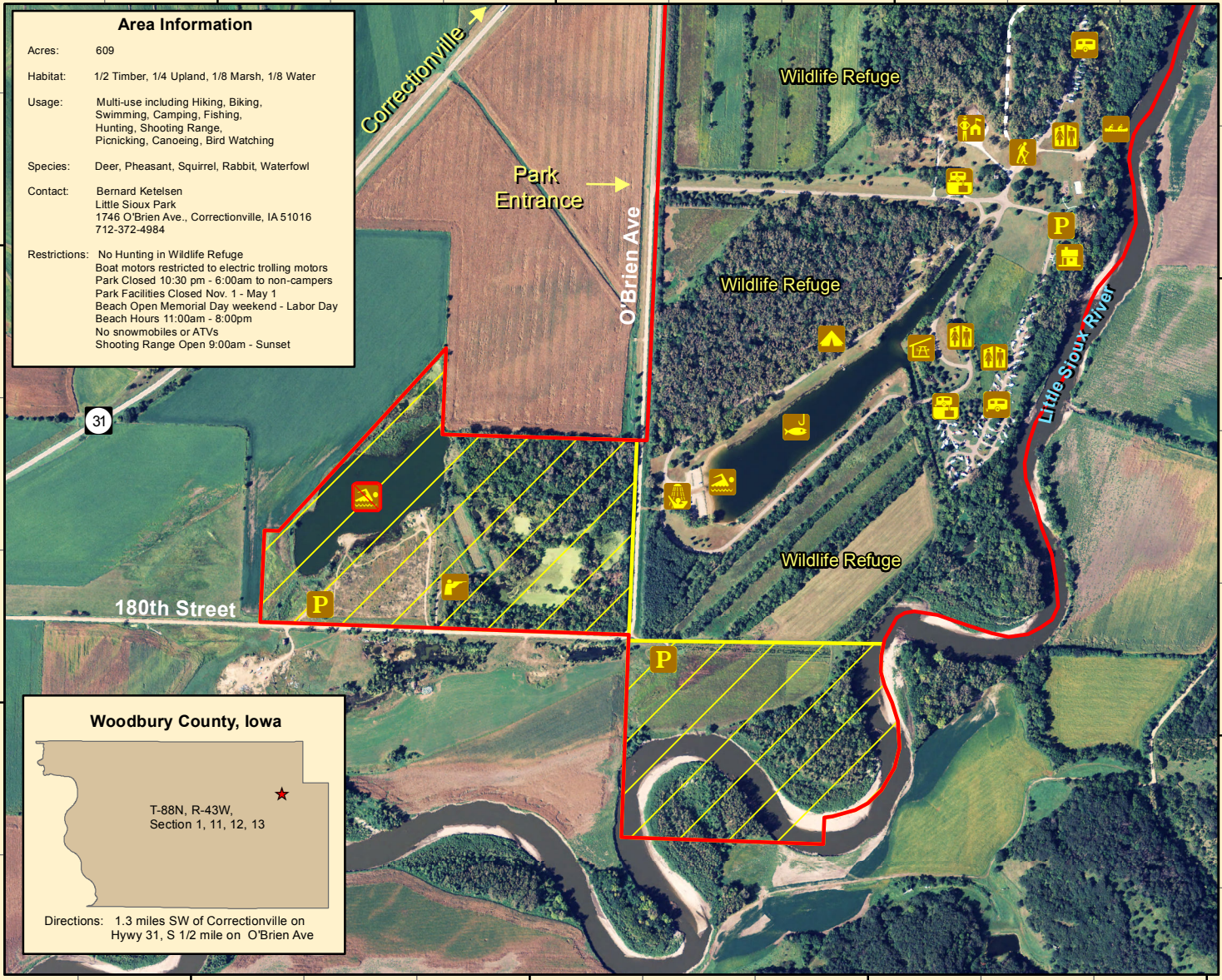
Contact: Bernard Ketelsen
 Little Sioux Park
 1746 O'Brien Ave., Correctionville, IA 51016
 712-372-4984

Restrictions: No Hunting in Wildlife Refuge
 Boat motors restricted to electric trolling motors
 Park Closed 10:30 pm - 6:00am to non-campers
 Park Facilities Closed Nov. 1 - May 1
 Beach Open Memorial Day weekend - Labor Day
 Beach Hours 11:00am - 8:00pm
 No snowmobiles or ATVs
 Shooting Range Open 9:00am - Sunset

Woodbury County, Iowa

T-88N, R-43W,
 Section 1, 11, 12, 13

Directions: 1.3 miles SW of Correctionville on
 Hywy 31, S 1/2 mile on O'Brien Ave



Legend

- | | | | | | |
|--------------------|---------------|-------------------|------------|----------------|----------------|
| Union Bridge Trail | Rental Cabins | Modern Camping | Restrooms | Beach Shower | Rental Shelter |
| Little Sioux Park | Hunting Area | Primitive Camping | Trail Head | Swimming | Ranger Station |
| No Swimming | Trailer Dump | Fishing | Canoeing | Shooting Range | Parking |

Little Sioux Park South



Aerial Photo - Summer, 2010
 Map Creation Date: 1/2011

Disclaimer: Information and boundaries depicted on this map have been carefully reviewed. However, this data is not guaranteed to be free of errors or inaccuracies as provided by Woodbury County or other providers and sources of data contained in this map. Boundary signs have been placed on our areas to ensure users do not trespass on private property.